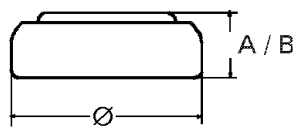


Data Sheet¹


Type Number	65013	
Type Designation	ML1220	
Designation IEC	---	
System	Lithium-Alloy / Manganese Dioxide Organic Electrolyte	
Application	MBU / RTC	
UL Recognition	MH13654	
Nominal Voltage [V]	3,0	
Typical capacity C [mAh]	16 (Disch. 0,2 mA down to 2.0V at 20°C)	
Typical capacity C [mAh]	17 (Disch. 0,01 mA down to 2.0V at 20°C)	
Nominal Energy [mWh]	48	
Dimensions [mm]	min.	max.
Diameter	12.3	12.5
Height (A/B)	1.8	2.0
Weight, approx. [g]	1.0	
Charging Method		
Constant current	0,2 mA, Cut-off voltage 3.4V	
Constant Voltage	3.4V ($R_L=15k\Omega$)	
Discharge cut-off voltage [V]	2.0	
Max. Pulse Discharge Current [mA]	8	
Max. Discharge current (cont.) [mA]	2	
Operating temperature [°C]	Storage, Discharge and Charge -20°C to +60°C	
Resistance [Ω]	40 - 80	
Self discharge [%/p.a.]	< 3	
Life expectancy [cycles]		
10%DOD	> 1000	
100%DOD	> 50	

¹ Prior to use read Material Data Sheet